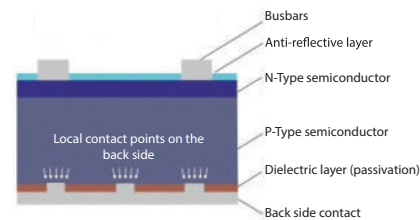
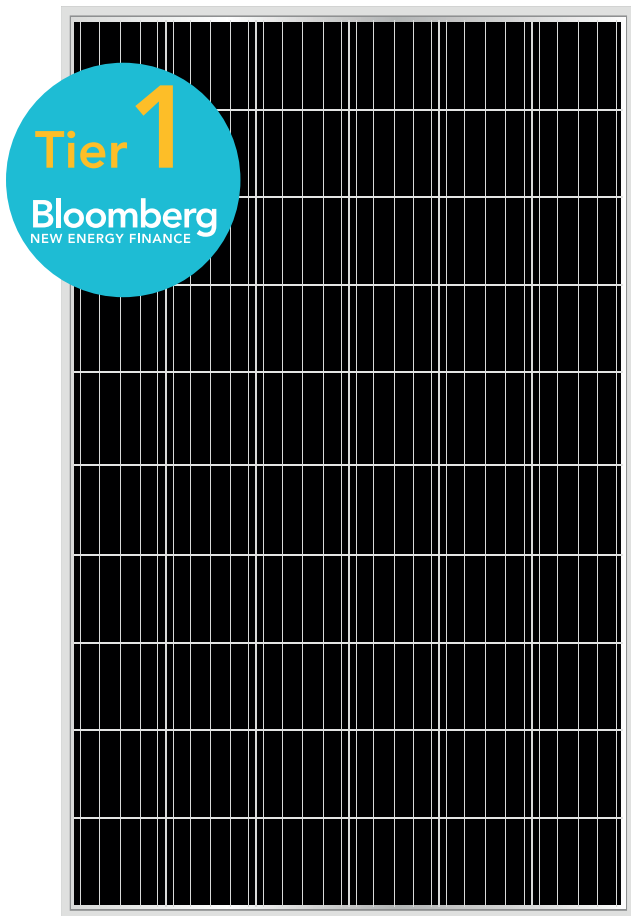


# AB-60M

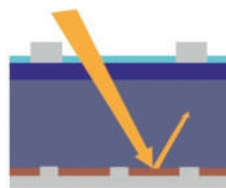
60 (6×10) 158.75×158.75mm

310W  
315W  
320W

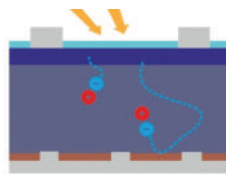
## Monocrystalline PV modules



**Technology  
PERC**



**Increasing the absorption capacity of the photocell**

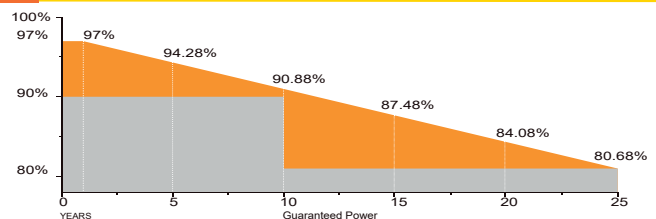


**Reflection of electrons in the p-n transition zone**

### WHY ABI-SOLAR?

- Manufacturing and assembly of PV modules are performed only on East Asian enterprises from **Bloomberg Tier 1** list.
- PV modules are tested and demonstrate high reliability in various climatic conditions and in a wide range of insolation.
- High efficiency and return on investment guaranteed around the world.
- Modules certified by global testing facilities: IEC61215, IEC61730, CE, ROHS, TÜV.
- Manufacturing with international quality standards and environment management system: ISO9001 and ISO14001.
- Maximum power and performance at minimal price ensure fast return of investments.
- Compatibility with both on-grid and off-grid PV systems guaranteed.

### INDUSTRY-LEADING WARRANTY BASED ON NOMINAL POWER



Based of nominal power (P<sub>nom</sub>)  
25-year transferrable power output warranty:  
95% - 5 years; 90% - 12 years; 85% - 18 years; 80% - 25 years  
10-year material and workmanship

**10**

**YEAR**

Manufacturing Warranty

**12**

**YEAR WARRANTY**

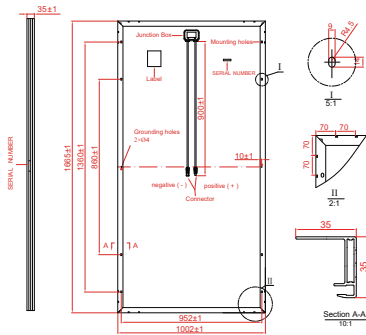
90% Power Output

**25**

**YEAR WARRANTY**

80% Power Output

## MECHANICAL DRAWINGS



## MECHANICAL SPECIFICATIONS

Cell type	Perc Mono crystalline
Number of cell	60 (6x10) 158,75 x 158,75 mm
Dimensions (AxBxC)	1665x1002x35 mm
Weight	18.5 kg
Font glass	3.2 mm tempered low iron glass
Frame	Anodized aluminium alloy
Junction Box	IP67 with 3 bypass diodes
Connector	MC4 Compatible
Output cables	TUV, length: ±900 mm, 4.0 mm <sup>2</sup>
Maximum snow load (IEC 61215)	5400Pa

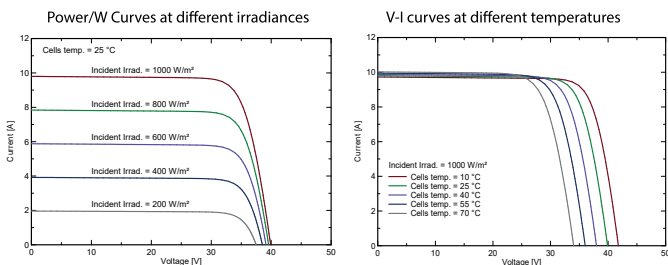
## ELECTRICAL CHARACTERISTICS (STC)

	AB310-60M	AB315-60M	AB320-60M
Maximum Power (Pmax)	310	315	320
Shot Circuit Current (Isc)	9.89	9.98	10.07
Open Circuit Voltage (Voc)	40.1	40.3	40.5
Maximum Power Current (Impp)	9.43	9.52	9.61
Maximum Power Voltage (Vmpp)	32.9	33.1	33.3
Module Efficiency	18.51%	18.81%	19.10%
Power Tolerance		(0~+5W)	

## NOCT

	AB310-60M	AB315-60M	AB320-60M
Maximum Power (Pmax)	230W	234W	238W
Shot Circuit Current (Isc)	7.96A	8.04A	8.12A
Open Circuit Voltage (Voc)	37.0V	37.2V	37.4V
Maximum Power Current (Impp)	7.55A	7.63A	7.71A
Maximum Power Voltage (Vmpp)	30.5V	30.7V	30.9V
Maximum System Voltage	VDC 1000V		
Maximum Series Fuse	20A		

STC irradiance: 1000 W/m<sup>2</sup> module temperature: +25 °C AM=1.5 NOCT irradiance: 800 W/m<sup>2</sup> module temperature: +20 °C AM=1.5



## TEMPERATURE CHARACTERISTICS

Nominal Operating Cell Temperature (NOCT)	45±2 °C
Temperature Coefficient of Pmax	-0,38 %/°C
Temperature Coefficient of Voc	-0,28 %/°C
Temperature Coefficient of Isc	0.05 %/°C
Operating Temperature	-40~+85 °C

## PACKING CONFIGURATION

	1665x 1002x 35 mm	
Container	20'GP	40'GP
Pieces per Pallet	30	30
Pallets per Container	12	26
Pieces per Container	360	780

## QUALIFICATIONS AND CERTIFICATES

